

Mullion Super Bright Center Column Glass Door Lighting

Specifications:

Description: This luminaire "Center Column" glass door lighting is ideal for refrigerated or freezer display case lighting applications. The "center column" mullion is designed to mount onto the center door frame and projects the light beam two opposite directions illuminating the products on both the right and left sides of the glass doors.

Features:

Lighting: Solid state lighting (SSL) LEDs; surface mounted device (SMD) populated onto a printed circuit board (PCB)

Tube and endcaps: polycarbonate LEXAN 244R

LED Driver Input: 100 VAC to 277 VAC; use only Cass 2 UL listed or UL recognized LED driver

LED Driver Output: 12 or 24 VDC

Light Beams: Can be ordered to project light at 15° or 30°; use 15° when products are 6" or closer to the door; use 30° when products are over 6" away from the door

Lens / Tube: Polycarbonate LEXAN 244R that has a heat deflection of 300°F

Life: Long life with L70 > 50,000hrs

Warranty: 5 year limited warranty from manufacturing defects

Safety: All our luminaires are UL/cUL Listed & NSF approved

Certifications: ISO 9001:2015 certified

Performance Data:

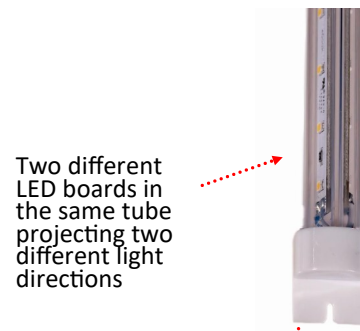
This custom-built mullion lights have 128 variations that affect performance data. Below is the data from one of the many UL tests we have had conducted. Please contact us if you require specific data for your unique custom-built light fixture.

Voltage	Length (in)	CCT (K) Nom.	Lens	Angle of light	CRI	CCT (K) Actual	Lu-mens (lm)	Power (W)	Efficacy (lm/W)
24	69	30K	Frosted	15	92.9	3007	2929	25.75	113.7

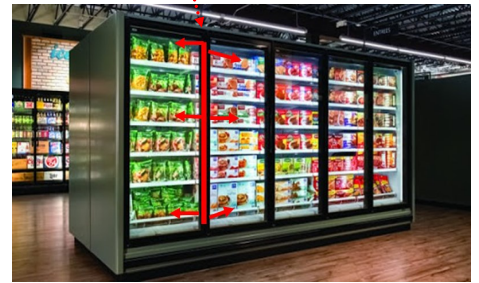
How To Use Part Numbers: To Place A Center Column Order:

Series	Voltage	Length Options	Color (CCT)	Lens Options	Projection of Light
MM2R-3250	12 or 24V	25", 47", 58" or 69"	30K-3000K 35K-3500K 40K-4000K 50K-5000K	C Clear F Frosted	15 or 30°
MM2R-3250	24V	47	40K	F	15

Example part number: MM2R-3250-12V-47-F-15



Two different LED boards in the same tube projecting two different light directions



Options:

Color: Standard CCTs choices are 3000K, 3500K, 4000K, and 5000K with a CRI >90

Lens / Tube: Clear or frosted

Length: 25", 47", 58" or 69"

Voltage: 12 or 24 VDC

Projection of Light: 15 or 30°

Accessories:

Brackets: See next page

Drivers: See Driver Spec Sheet

Jumpers: See next page

Harnesses: See next page



ISO 9001 2015 Certified

Brackets:

Feature: Metal snap-in or Polycarbonate LEXAN 244R snap-in

Ordering Tips:
Order in quantities of 2 for a smaller single luminaires or 20 for larger projects.

We recommend our brackets are used 4-6" from each end for luminaires 24" or shorter; also one every 24" for

Brackets Part Number and Prices:

Description	Quantity	Part Number	Price
Metal	2	O-BRK-MIN-M-2	\$2.50
	20	O-BRK-MIN-M-20	\$25.00
Polycarbonate	2	O-BRK-MIN-P-2	\$3.00
	20	O-BRK-MIN-P-20	\$30.00



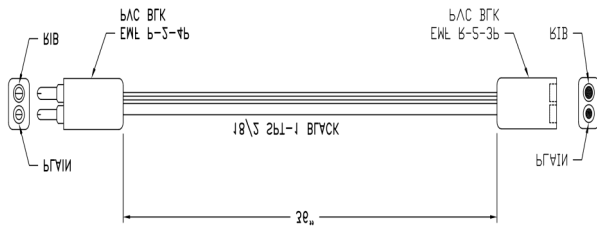
Jumpers:

Features:
Polarized for direct 12v or 24v DC power supply
18/2 AWG (18 gauge wire / 2 wires parallel)
Wire rated at 105 °C ; Molded ends are rated at 90°C
Available in black or white
Available in lengths: 5" , 24" , 36" and 48"

Jumpers come in straight / straight, right-angle / right-angle, straight / stripped or right-angle / stripped variations.

Jumpers Part Number and Prices:

Description	Length	Color	Part Number	Price
5" Jumper, Female, Striped End, Polarized	5"	Black	M-J-05-F-SE-P	\$4.90
5" Jumper, Male, Striped End, Polarized	5"	Black	M-J-05-M-SE-P	\$4.90
24" Jumper, Female, Striped End, Polarized	24"	Black	M-J-24-F-SE-P	\$5.50
24" Jumper, Male, Striped End, Polarized	24"	Black	M-J-24-M-SE-P	\$5.50
36" Jumper, Female, Male, Polarized	36"	Black	M-J-36-F-M-P	\$6.70
48 Jumper, Female, Male, Polarized	48"	Black	M-J-48-F-M-P	\$8.00
48" Jumper, Female, Striped End, Polarized	48"	Black	M-J-48-F-SE-P	\$6.70
48" Jumper, Male, Striped End, Polarized	48"	Black	M-J-48-M-SE-P	\$6.70



Harnesses :

Features:
Polarized for direct 12v or 24v DC power supply
18/2 AWG (18 gauge wire / 2 wires parallel)
Wire rated at 105 °C ; Molded ends are rated at 90°C
Available in black or white
Available in lengths: 5" , 24" , 36" and 48"

Jumpers come in straight / straight, right-angle / right-angle, straight / stripped or right-angle / stripped variations.

Harnesses Part Number and Prices:

Description	Length	Color	Part Number	Price
One MPH-36-2F-1M + One MPH-36-1F-1M	36"		MMH-1D-1R-1L	\$4.70
Two MPH-36-2F-1M + One MPH-36-1F-1M	36"		MMH-2D-1R-1L	\$12.25
Three MPH-36-2F-1M + One MPH-36-1F-1M	36"		MMH-2D-1C-1R-1L	\$23.30
Four MPH-36-2F-1M + One MPH-36-1F-1M	36"		MMH-3D-2C-1R-1L	\$30.60
Five MPH-36-2F-1M + One MPH-36-1F-1M	36"		MMH-4D-3C-1R-1L	\$38.00
Six MPH-36-2F-1M + One MPH-36-1F-1M	36"		MMH-5D-4C-1R-1L	\$45.30

