

## Bracket Options for Mini (0.81" width) Luminaires

### Description:

LEDingEdge provides a wide variety of mounting options. Our metal, polycarbonate, magnet, rotating and acrylic brackets allow for easy installation, removal and cleaning.

### Bracket Options / Features:

**Metal:** nickel plated snap-in brackets; can be mounted with one #4 wood screw or 1/8" flush mount rivet. This bracket has been NSF certified.

**Polycarbonate:** snap-in bracket; can be attached with one #4 wood screw or 1/8" flush mount rivet.

**Rotating:** Polycarbonate rotating mount bracket allows LEDingEdge luminaire light to be directed precisely where the light needs to be. Secure ratcheting design holds the angle desired after aiming the light; mounted with two #4 wood screws or 1/8" flush mount rivets.

**Magnet:** strong "rare earth" magnet with snap-in bracket; eliminates need for drilling mounting holes. This bracket has been NSF certified.

**Acrylic:** clear bracket fits over luminaire; mounted with two #4 wood screws or 1/8" flush mount rivets.

### Ordering Tips:

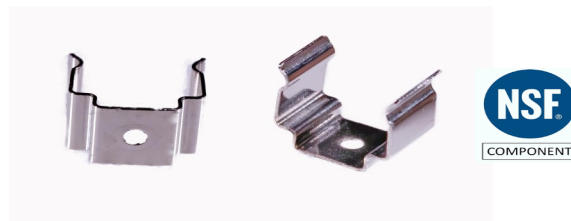
Order in quantities of 2 for a smaller single luminaires or 20 for larger projects.

We recommend our brackets are used 4-6" from each end for luminaires 24" or shorter; also add one every 24" for longer luminaires.

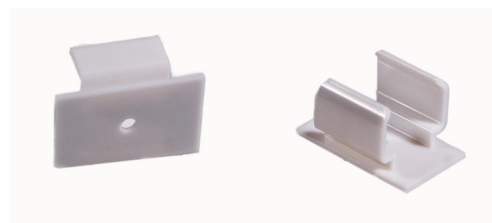
### Part Numbers:

Bracket	Quantity	Part Number
Metal	2	O-BRK-MIN-M-2
	20	O-BRK-MIN-M-20
Polycarbonate	2	O-BRK-MIN-P-2
	20	O-BRK-MIN-P-20
Rotating	2	O-BRK-MIN-R1-2
	20	O-BRK-MIN-R1-20
Magnet	2	O-BRK-MIN-P-MAG-2
	20	O-BRK-MIN-P-MAG-20
Acrylic	2	O-BRK-MIN-A-2
	20	O-BRK-MIN-A-20

### Metal



### Polycarbonate



### Rotating



### Magnetic



### Acrylic

