

Brackets Options for Micro-Mini (0.63" width) Luminaires

Description:

LEDingEdge provides a wide variety of mounting options. Our metal, polycarbonate, magnet, rotating and acrylic brackets allow for easy installation, removal and cleaning.

Options / Features:

Polycarbonate: snap-in bracket; can be attached with one #4 wood screw or 1/8" flush mount rivet.

Rotating: Polycarbonate rotating mount bracket allows LEDingEdge luminaire light to be directed precisely where the light needs to be. Secure ratcheting design holds the angle desired after aiming the light; mounted with two #4 wood screws or 1/8" flush mount rivets.

Magnet: strong "rare earth" magnet with snap-in bracket; eliminates need for drilling mounting holes.

Ordering Tips:

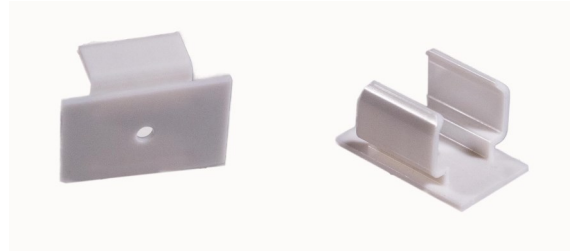
Order in quantities of 2 for a smaller single luminaires or 20 for larger projects.

We recommend our brackets are used 4-6" from each end for luminaires 24" or shorter; also add one every 24" for longer luminaires.

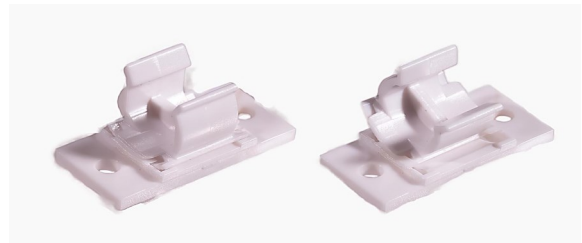
Part Numbers:

| Bracket | Quantity | Part Number |
|---------------|----------|-----------------|
| Polycarbonate | 2 | O-BRK-MIC-P-2 |
| | 20 | O-BRK-MIC-P-20 |
| Rotating | 2 | O-BRK-MIC-R1-2 |
| | 20 | O-BRK-MIC-R1-20 |
| Magnet | 2 | O-BRK-MIC-2 |
| | 20 | O-BRK-MIC-20 |

Polycarbonate



Rotating



Magnetic

